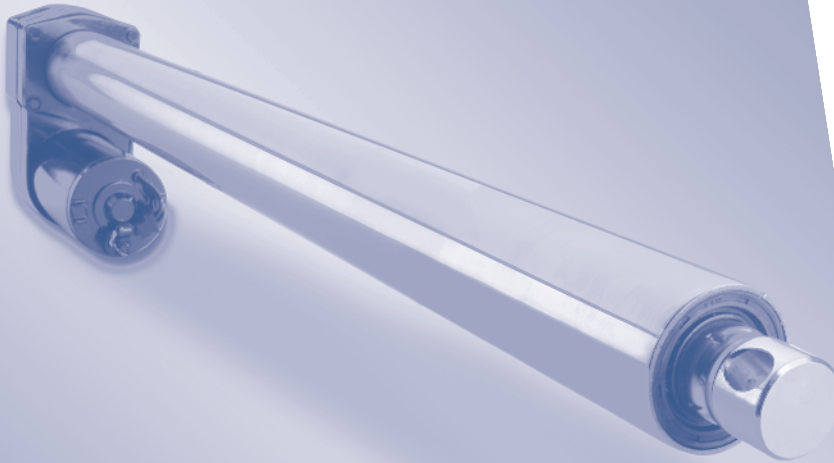


# ELECTRAK<sup>®</sup> MARINE ACTUATORS

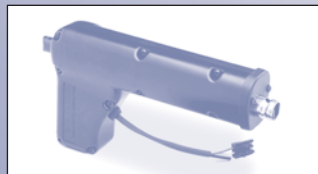


## Features & Benefits

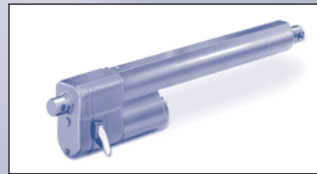
- Compact size
- Operates off 12 or 24 VDC boat battery for versatility
- Draws power only when load is being moved for high efficiency
- Holds load with power off for safety
- Stroke lengths from 2 to 24 inches
- Load ratings from 25 to 1500 lbs.
- Ball or acme screw drives for high or moderate load ratings
- Built-in brakes on ball bearing screw models to prevent back driving
- Weather protection seals & gaskets
- Ignition protected motors per Coast Guard requirements on selected designs
- Overload protection
- Lifetime lubrication gearbox - no maintenance

Thomson offers a complete line of Electrak linear actuators and controls to provide the boat and marine manufacturer with an ideal source for push-pull power on watercraft. Our Electrak linear actuators are well suited for the marine industry due to their compact size, 12 or 24 VDC operation, high efficiency and broad load capabilities.

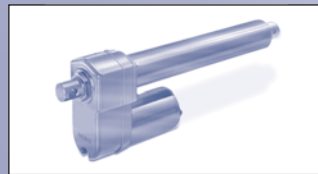
The full range of Electrak actuators offer users complete control of every aspect of a boat's operation electrically, without the complication, high cost, and maintenance associated with hydraulic systems. Electrak actuators are easy to install with clevis mounting and eliminate the need for hoses, pumps, filters, regulators, and periodic maintenance



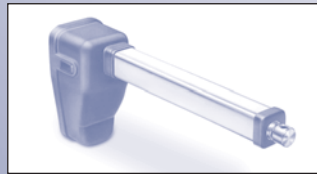
Electrak E050



Electrak 1



Electrak 10



Electrak E150

**THOMSON**<sup>™</sup>

Ideal for Power Boats and Sailcraft : Electrak linear actuators find extensive use on power boats and sailcraft – all with the push of a button.



*Typical Applications:*

- Raising, lowering, holding hatch covers
- Boom control when raising or lowering the mainsail
- Opening, closing, holding windows
- Downhaul control
- Raising and lowering trailer hitches
- Seat positioning

	Electrak 050	Electrak 1	Electrak 2		Electrak 10		Electrak 150
Load Capacity	25, 50, 112	25, 75	250	250	500, 1000, 1500	500, 1000, 1500	110, 225, 450
Stroke Length	2, 4, 6, 8	2, 4, 6	4,8,12,18,24	12, 18, 24	4,8,12,18,24	12, 18, 24	1, 2, 4, 6, 8, 10, 12, 14, 16
Type of Screw	Acme	Acme	Acme	Acme	Ball	Ball	Acme
Load Limiting Clutch	Yes	No	Yes	Yes	Yes	Yes	No
Limit Switches Stroke Standard	Fixed End of Stroke Standard	Fixed	No MCS-2007 Control	No	No	No	Optional Adjustable End of Stroke
Motor Overload Protection	Yes	Yes	Yes	Yes	Yes	Yes	Yes
Restraining Torque (max)	None - Internally Restrained	20 lb. in	100 lb. in	100 lb. in	100 lb. in	100 lb. in	None - Internally Restrained
Optional Controls	DPDT switch	DPDT switch	DPDT switch	DPDT switch	DPDT switch	DPDT switch	DPDT switch
Ignition Protected Motor	No	No	Optional	Yes	Optional	Yes	No
Cover Tube	Plastic	Painted Aluminum	Painted Steel	Stainless Steel	Painted Steel	Stainless Steel	Anodized Aluminum
Environment	IP56	Washdown w/ 96 hour salt spray test rating	Washdown w/ 96 hour salt spray test rating	Washdown w/ 96 hour salt spray test rating	Washdown w/ 96 hour salt spray test rating	Washdown w/ 96 hour salt spray test rating	IP56



Thomson makes every attempt to ensure accuracy and reliability of the specifications in this publication. Specifications are subject to change without notice. Thomson provides this information "AS IS" and disclaims all warranties, express or implied, including, but not limited to, implied warranties of merchantability and fitness for a particular purpose. It is the responsibility of the product user to determine the suitability of this product for a specific application.

©2004 Thomson Industries, Inc. 200407-05 20160810KB

**FOR IMMEDIATE ASSISTANCE:**

Internet:	www.ThomsonLinear.com	In Europe:	Phone: +46 (0) 44 24 67 00
In USA, Canada or Mexico:	Phone: 1-540-633-3400		Fax: +46 (0) 44 24 40 85
	Fax: 1-540-639-4162	or write:	E-mail: helpdesk@tollo.com
	E-mail: DMAC@thomsonlinear.com		Thomson Industries, Inc.
or write:	Litrequest@thomsonlinear.com		Tollo Linear AB
	Thomson Industries, Inc.		Box 9053
	203A West Rock Road	or	SE-291 09 Kristianstad Sweden
	Radford, VA 24141 USA		Phone: +49 (0) 70 22 504-0
In UK:	Phone: 0800 975 1000		Fax: +49 (0) 70 22 541-68
	Sales Fax: 0800 975 1001	or write:	Thomson GmbH
	E-mail: LMSEurope@thomsonlinear.com		Nürtinger Strasse 70
or write:	Thomson Industries, Inc.		D-72649 Wolfschlugen Germany
	Fishleigh Road, Roundswell Business Park	Elsewhere:	Phone: 1 (516) 883-8937
	Barnstaple		Fax: 1 (516) 883-7109
	EX31 3UD UK		
Catalogue request:	catalogues@thomsonlinear.com		